



Operating Manual

Introduction to the Simple Control System

Welcome to the Simple Control System, and thank you for your purchase! As its name suggests, the system makes it easy to operate today's home electronics. This manual provides a simple guide to understand and operate your system. The Simple Control System is extremely flexible. And our remote support ensures the highest level of customer service and technical maintenance.

Some of the illustrations in this manual may differ from your customized system because of your unique screen design and needs. If you want to make any changes to your system, you may do so up to six times a year at no extra charge. For example, if you want a new button for Kid's Room cameras, just let us know, and we will add it to your system as part of your Simple Control monthly service. Even if you just want to use a family photo as the Main background, just send us the digital photo. We'll make the change for you.

The Simple Control System can operate all of your home electronic equipment. All you need to do is enjoy it.

Table of Contents

1. Getting Started

- 1.1 Main Controls
- 1.2 Connection indicator
- 1.3 Audio/Video
 - a) Television and Movies
 - b) CDs and Radio
- 1.4 Television
- 1.5 Sound

2. Using the System - Main Control Buttons

- 2.1 Television
- 2.2 Kids' Television
- 2.3 DVDs and Movies
- 2.4 Music
- 2.5 Weather
- 2.6 Lights
- 2.7 Restricted Channels
- 2.8 Remotes
- 2.9 Room Control
- 2.10 HVAC (Heating and Air Conditioning)
- 2.11 Camera
- 2.12 Energy Management

3. Automated Activities

4. Support

5. Troubleshooting

Getting Started

Hardware:

Make sure no serial or USB modules are plugged into your Simple Control Base unit before plugging in the power to the base unit. Wait 2 minutes for all of the components to load, then plug in any attachments such as your lighting controller or energy management display.

On the back of the Simple Control Box is an RJ45 socket. Connect a network cable into your router or switch. This hardwire connection is initially necessary even if you have the wireless version of the Simple Control system. After you have connected the base unit to the network send an email to customerservice@simplecontrol.com to arrange for configuration. We will dial into the system and complete the configuration.



1.1) Main Controls

The controls displayed in this picture are the most commonly used activities in the typical household. Your screen may show different activities, depending on your customization.

1.2) Connection Indicator



Look at your touch screen. In the top right hand corner, there is a round symbol with a lighting bolt in the center. Make sure the color of this symbol is green, which indicates that your touch screen is connected to the Simple Control command controller and is ready to receive commands. If the symbol is red, the touch screen is not connected.

1.3) Audio/Video

The Simple Control *Power On* system is set up for separate activities that involve watching and listening together, such as watching TV, and listening only..

a) TV and Movies

The **ON** and **OFF** buttons in the lower *left* corner of the screen, turn on and off the necessary equipment for watching TV. The left button turns the equipment on; the right button turns it off.



b) Sound – CD and Radio

The **ON** and **OFF** button in the lower *right* corner of the screen is for tuning on and off the necessary equipment for Sound. The left button turns the equipment on; the right button turns it off. You can listen to audio without turning on your TV.

If you have music on Cable or Satellite Receiver, you'll see a check mark to the right (not shown) of the **ON** and **OFF** buttons. If the Cable box or Satellite Receiver is not already on, press this button to access your cable music channels.

1.4) Volume Control

Volume Control is in the middle of the far right hand side of the touch-screen. The volume control is for both TV and Audio only.

The mute button is located below Volume Control. ..



2) Using the System – Main Control buttons

Main Control functions

TV channel buttons

2.1) Television

To watch Television, , press the button labeled **TV** on the left hand side of your touch screen.

Your system will show TV-network logos and coordinate the system for sound and vision. To change channels, press the corresponding logo button for the channel you wish to view. For more channels press either the **NEXT** or **BACK** button located on the upper right and lower right corners of the touch-screen. To return to the last channel you were watching, press the button in the lower left corner of the screen marked Pre Channel.

2.2) Kids' Television

This control works the same as the TV screen with network logos, but the selections are all children's programs. We can color code this button for younger children and/or change the button shape for easy recognition



2.3) Movies - DVDs and Cable/Satellite Movies

There are two selections under the main screen **MOVIES** button: **DVD** and **Premium Movie** channels (in this example HBO) to which you have subscribed.

DVD

To play DVDs select the **MOVIES** button halfway down the left side of the screen. Then select the **DVD** button in the middle of the screen. The screen changes to the DVD player remote control And automatically sets to the proper inputs on your television and/or surround sound system for that function.

* DVD player option (DVD changer): When the DVD button is selected, the DVD player and the DVD cover art is displayed (Figure A). Nine are listed per page at a time. To view more of the collection, use the up and down arrows below the movie covers (Figure B). To start the selection process, press the small movie cover.



Figure A

*DVD player option (DVD changer): To view more pages of the collection, use the left and right arrows below the movie covers (Figure B). To search for movie by Genre, use the left and right arrows below the **GENRE** label to display the choices. To view the collection by **GENRE**, press the button between the arrows displaying the Genre name.

To select a movie, press the small movie cover image on the left of the display. The image will appear in the larger frame. Press the large movie cover to play the movie.



Figure B

To access the DVD Changer Remote, press the **REMOTE** tab located above the largest movie cover in the center (Figure C).



Figure C.



Figure D

To display information about the movie, press the **INFO** tab above the large movie cover (Figure D). To close the information screen, press **X CLOSE** in the movie description section.

If you have a movie to add to your collection, press the **ADD MOVIES** tab above the large movie cover. You'll see the screen in Figure E.:



Figure E

Load the DVD into the changer and press the keyboard icon underneath SPECIFY SLOT NUMBERS in the lower left corner of the screen. Specify Slot Number(s). You' will see the following screen (Figure F):

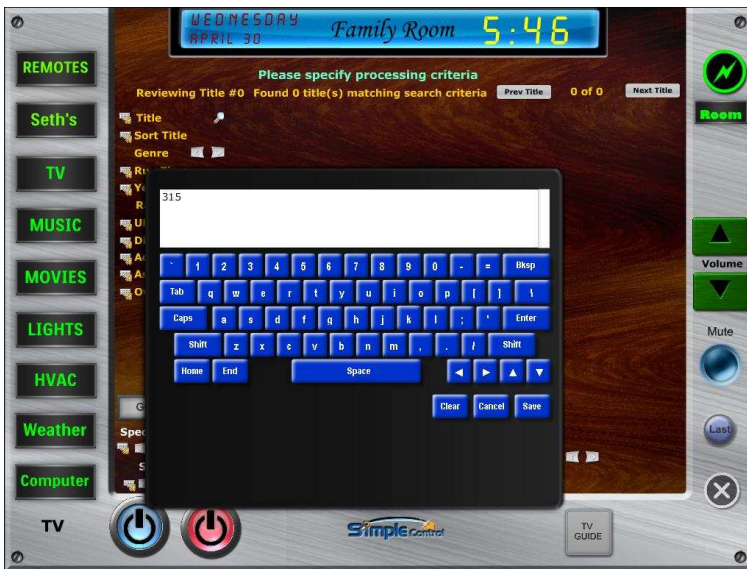


Figure F

Type in the slot number, or range of numbers. For example, you can use 315,316 and 322, or you can specify a range of lookups by typing a dash between the lowest slot you want examined and the highest. An example would be 1-100 or 210-215. Press **SAVE** when done, **CLEAR** to start over, or **CANCEL** to return to the Add Movies screen.

To look up the movie information and add it to the changer, press the larger **GET MOVIE(S)** button on the lower left side of the screen (Figure G). Once the cataloging is complete, you will see the following screen, which uses *The Chronicles of Narnia* as an example.

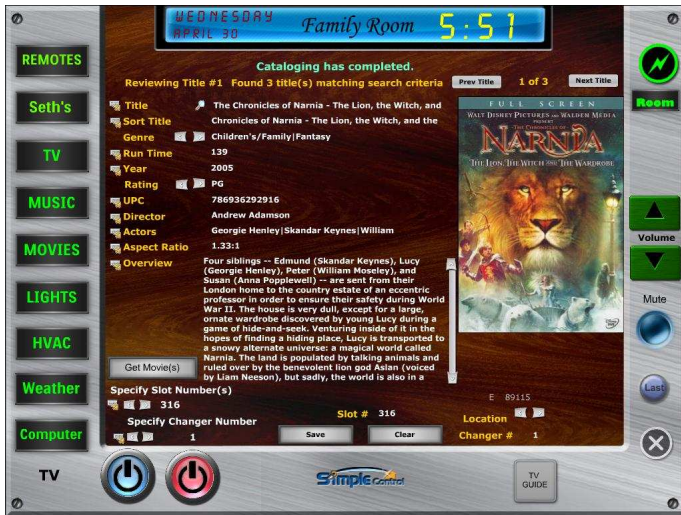


Figure G

Movie

To play a premium movie channel, select the **MOVIES** button halfway down the left side. . Then select the premium movie channel group you want to see. The list of movie channels for that group will display. When you select a movie from that group, the audio video system automatically will set up for that function.

CD

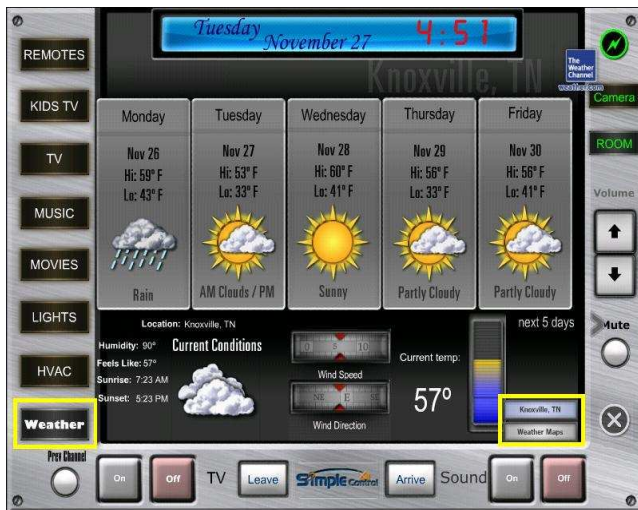
On the left hand side of the screen, your album covers will appear if you have chosen the Simple Control Music Option.

Under the Now Playing heading on the right hand side are the songs that are currently in the queue to be played. As you add songs to this list, they will be appended to the bottom of the list.

Touch the album cover you wish to play or add to the list. Press the play icon next to the song title to erase your list and play that song *or* press the + sign to add the song to your list.



Figure 1



2.5) Weather

Press the Weather button. Weather displays a five-day forecast for your area. To see five additional days, pressing **NEXT 5 DAYS**.

To view weather maps for your area press the **WEATHER MAPS** button.

We can customize Forecasts for as many as four different areas. If you have family that lives in another part of the country, for example, you can instantly access the weather information for that area. Just let us know the zip codes you want in your presets.

You may also view current Forecast information for any area by typing in the zip code on the built-in keypad. Press the **CLEAR** button to make sure the display bar is empty before you start.

2.6) Lights

The LIGHTS button brings up the screen with the lighting controls. Each light control button has a visual indicator for the state of the light: yellow when on and gray when off. Dimmer controls have a slider to adjust brightness.



Figures J





2.7) Restricted Channels

If you have opted for the Parental Control feature, the regular TV button will ask for a password before access is granted to the TV channel logo pages. Please contact Simple Control to establish Parental Control features by sending an email with your password choice to service@simplecontrol.com.



2.8) Remotes

There are more functions with remotes than may be displayed on the other screens. We collect all of your remote controls in one location. The system has added controls for more features with the remote control layouts. The main remotes most commonly used are CD Player, DVD Player, Cable and Satellite Receiver. We can add more remotes at your request.

2.9) Room Control

The name Family Room in this example (Figure F) tells you in which room you are controlling the equipment, in the case of TVs and Stereos.

If you have more than one room set up in the system, you may change to a different room by pressing the **ROOM** button located above the volume control, then press the name of the room you want. The room name changes to the new area, and the control of the equipment then changes to that room. To return to the previous room, or select a new room, press the corresponding room name button.



2.10) HVAC (Heating and Air Conditioning)

If you have Simple Control Thermostats, you may access your heating and cooling system by pressing the HVAC button on the touch screen.

Single-stage systems have one set temperature point. The modes are off, heat, and cool. To set the temperature, use the up and down arrows or use one of the presets in the upper left corner.



Dual-stage systems offer set points for cooling and heating, which you set independently. Dual-stage is set up for five different modes: Heat, Cool, Emergency Heat, Auto, and Off. There also are two modes for the fan operation: Auto and Off.

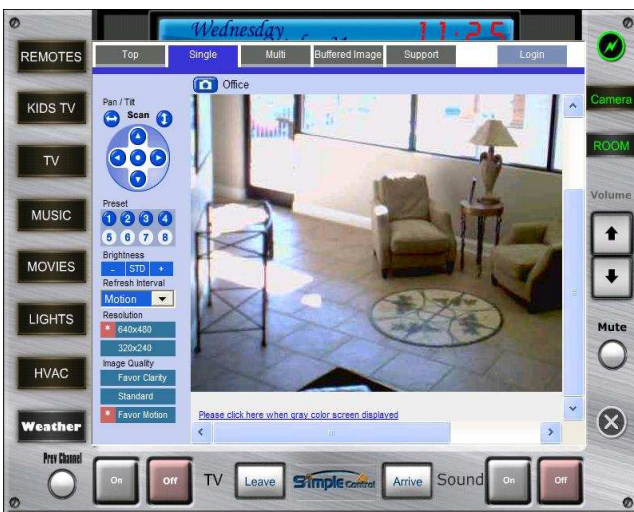
To set the temperatures for heating and cooling, use the up and down arrows under **Heat Set Point** and **Cool Set Point**.


2.11) Camera

If you have the Simple Control Camera option, you access your camera(s) by pressing the **CAMERA** button in the upper right corner under the connection indicator.

For a single-camera systems, press the **SINGLE** button tab on the page that opens.

For multiple-camera systems, press the **MULTI** button to the right of the **SINGLE** button. Each camera's image will be displayed.



If you have a camera capable of panning and tilting, you may move the camera by touching the area you want to center on the screen. This screen requires exiting by pressing the  button to access the main screen buttons.

2.12) Press the connection icon



to show energy usage. This screen shows current energy being used, month to date usage, projected usage, cost month to date, projected cost for the month, and more.

3) Automated activities

The Simple Control system can control complex automated events. Because of the individual needs of each customer, these automation events are not preconfigured. If you wish to add automation features, please let us know and we will be glad to program your system. In this example, two added buttons turn off all lights, set the thermostat back, and turn off all audio/video equipment in the house when **LEAVE** is pressed. The **ARRIVE** button was programmed to turn on path lights to the kitchen, set the thermostat to a comfortable temperature, and start a random CD playing.

4) **Support**

One of the most distinctive features of the Simple Control System is its remote maintenance capability. Your monthly fee covers troubleshooting, button additions/deletions, and simple redesigns. We can remotely correct most issues without having to disturb your family.

If there is a hardware problem, it may require an on-site visit by one of our technicians. If you have any questions or requests:

Email: service@simplecontrol.com


Phone: 800-764-0582 press technical support option

Fax: 865-531-0642.

All Simple Control hardware is covered by a one-year warranty from the date of purchase.

Thank you!

5) Trouble Shooting

Module	Issue	Solution
Camera	 disappears but camera is still displayed.	Press the CAMERA button again and then press the X .
Music	Can't turn the volume down when the Simple Control CD jukebox is displayed	Press the X button to exit the CD jukebox. turn volume down (or up) and access the CD jukebox again either through the REMOTES or MUSIC buttons.